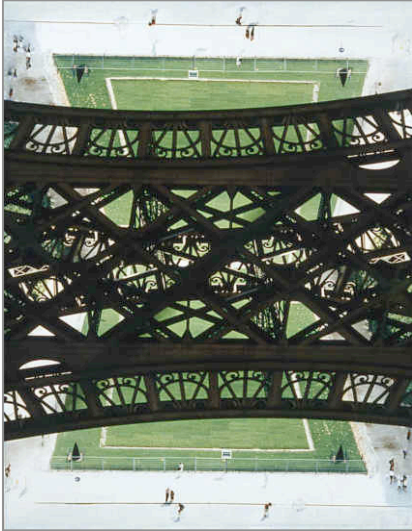


Double Take

6 May – 4 June 2006

Bay Area Artists Kathryn Dunlevie and Klari Reis to
Exhibit at the Chelsea Art Gallery

PALO ALTO, California, 20 April 2006 – Chelsea Art Gallery is pleased to announce its first exhibition of Bay Area artists with *Double Take*, a two-person show with Palo Alto artist Kathryn Dunlevie and San Francisco artist Klari Reis. Upon first glance the artists' work seem dissimilar, but a second look reveals a shared interest in unconventional processes and the manipulation of space and perspective within an image.



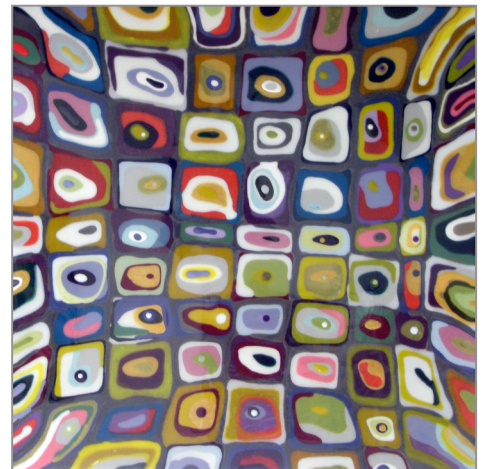
Kathryn Dunlevie
Eiffel Tower Tennis

Despite their different preferences in subject matter and process, both artists use highly innovative methods to explore space and viewership. Reis works with epoxy polymer, a highly toxic material in its raw state, and stains it with gels to create colorful compositions of amorphous and organic forms. Dunlevie uses traditional materials in a progressive manner, combining photographs and acrylic paint to produce a hybrid form of photography and painting. Her images of juxtaposed spaces create views that can become confusing, grandiose, and intrusive in comparison to the version in reality. Pool decks and carwashes emerge as disorienting puzzles to be sorted out by the viewer, and a dizzying Eiffel Tower becomes an illusion of a tennis court. Reis's abstracted compositions also create intriguing views. Her works are based on microscopic views of pharmaceuticals, intending to relate to the human organism and to our existence on the cellular level. Dunlevie and Reis's works challenge traditional

perspectives and conventional modes of seeing, urging the viewer to think carefully about what motivates the image before him. In *Double Take*, Dunlevie and Reis will certainly make you look again.

The exhibition opens with a private view with the artists on Saturday, May 6th, from 6 to 9 p.m. Champagne and canapés will be served. Also in conjunction with the exhibition is an artist lecture on Wednesday, May 17th, from 6:30 to 8 p.m. Dunlevie and Reis will speak about their work and field questions from the audience during a question and answer session. Space is limited for both events; please RSVP to 650.324.4450. The exhibition may be previewed at www.chelseaartgallery.com.

Chelsea Art Gallery is located at 440 Kipling Street in downtown Palo Alto. Hours are Wednesday to Saturday, 11 to 7 p.m., Sunday 12 to 5p.m., and by appointment. For more information on Chelsea Art please visit www.chelseaartgallery.com. All media inquiries should be forwarded to Gallery Director Tenley Bick at 650.324.4450 or info@chelseaartgallery.com. Images are available upon request.



Klari Reis, *Benazepril*

Please note: *Benazepril* is 48 x 48 x 2 in., mixed media and epoxy on wood panel. *Eiffel Tower Tennis* is 38 x 29 in., C-prints and acrylic on panel.

© Copyright: All images property of the artist/gallery and may not be reproduced without permission.